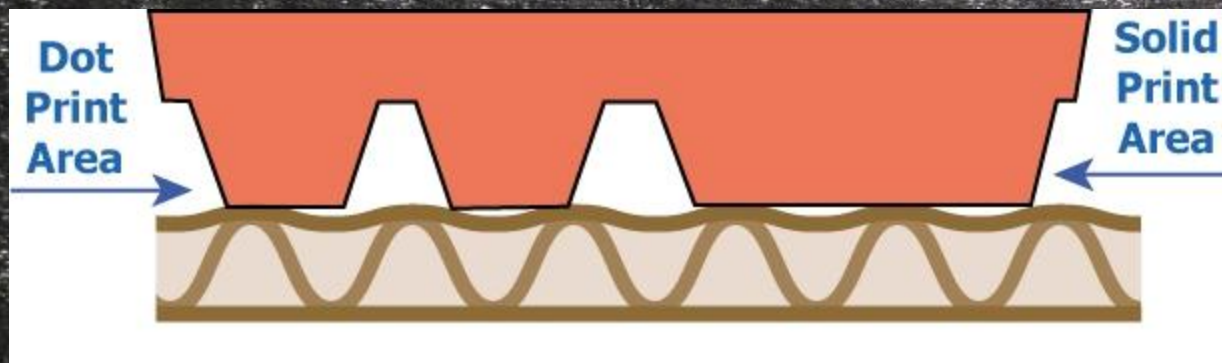
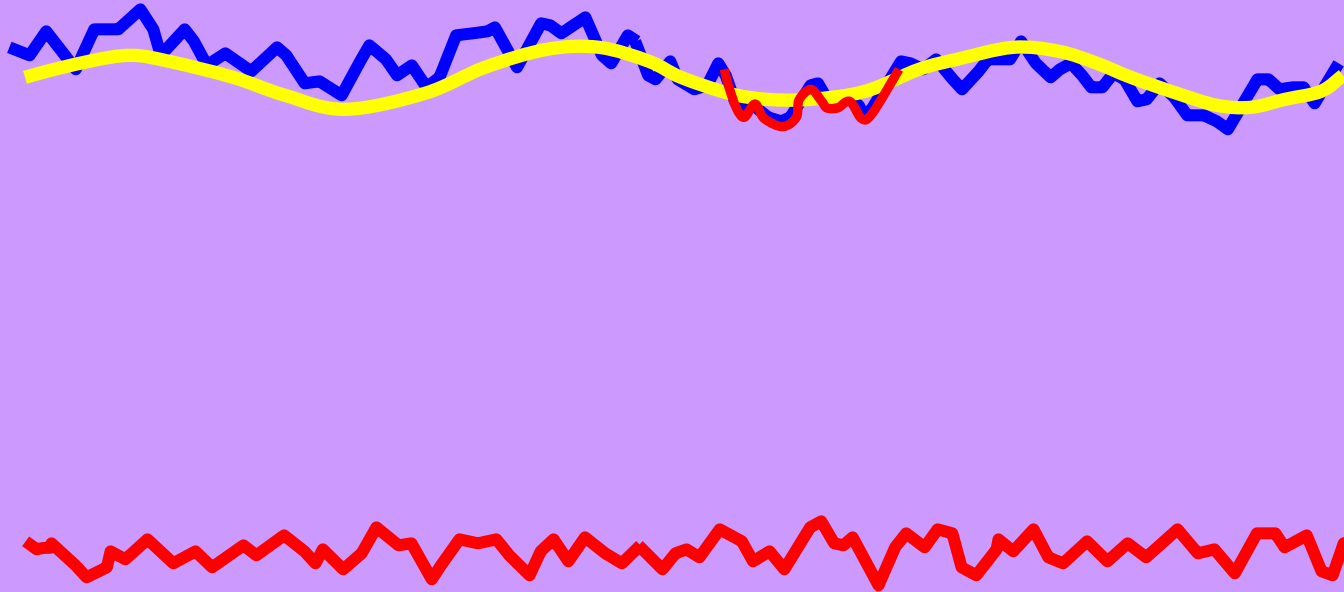


Washboarding



Surface Texture Terminology



Board
Surface

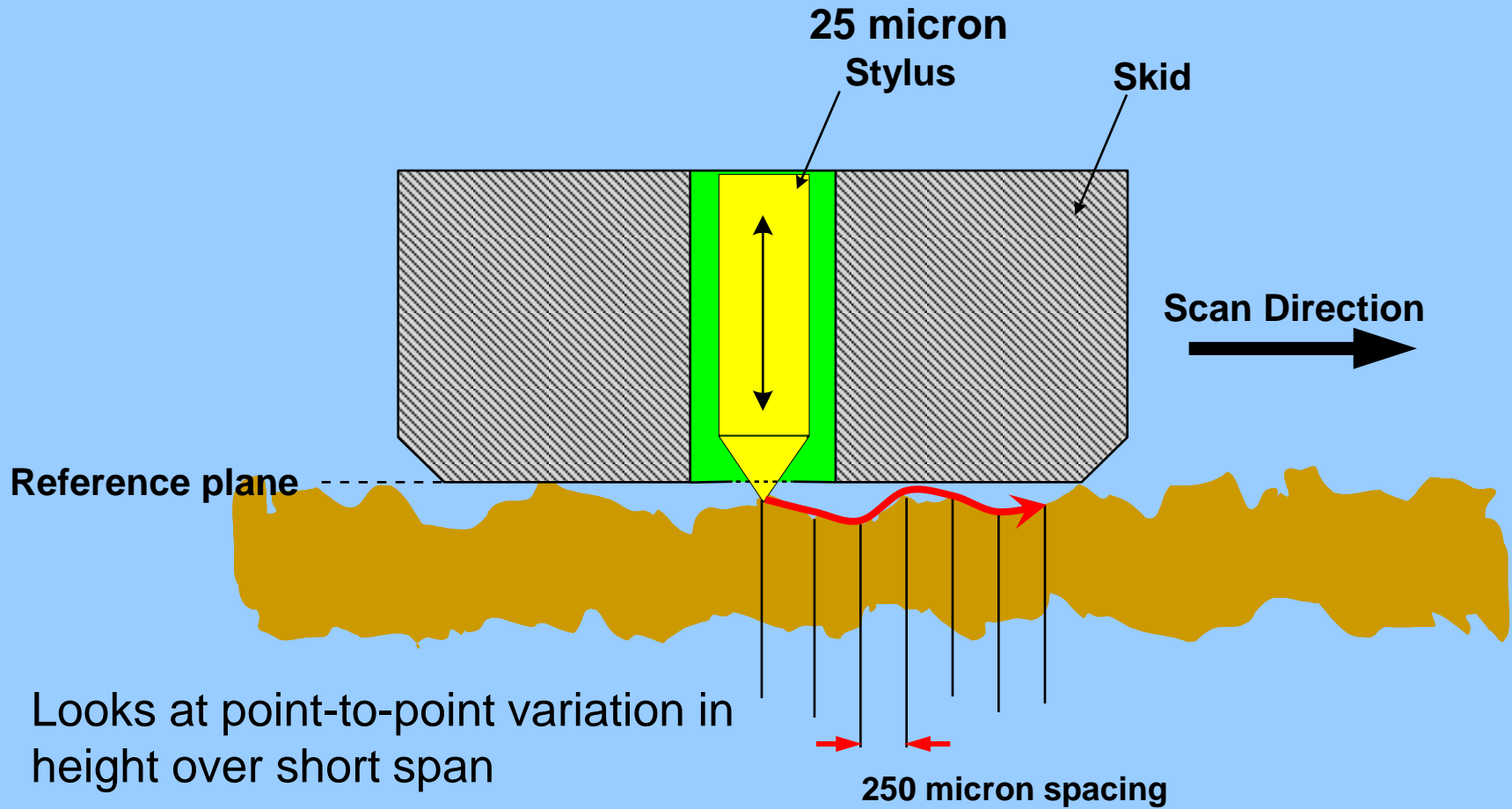
Wavy
Domain

Roughness
Domain

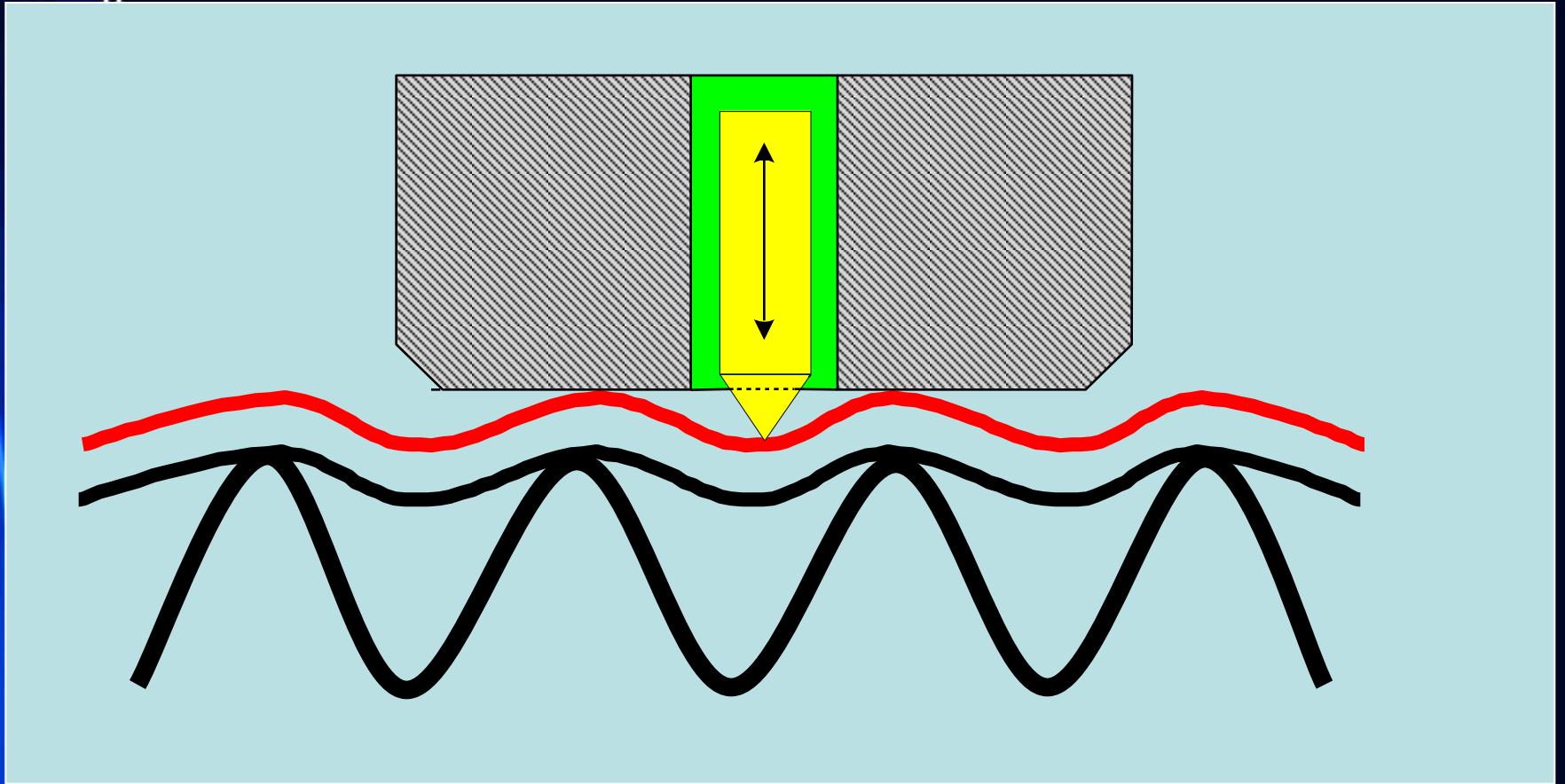
Wavy versus rough... a matter of scale

Which is more important?

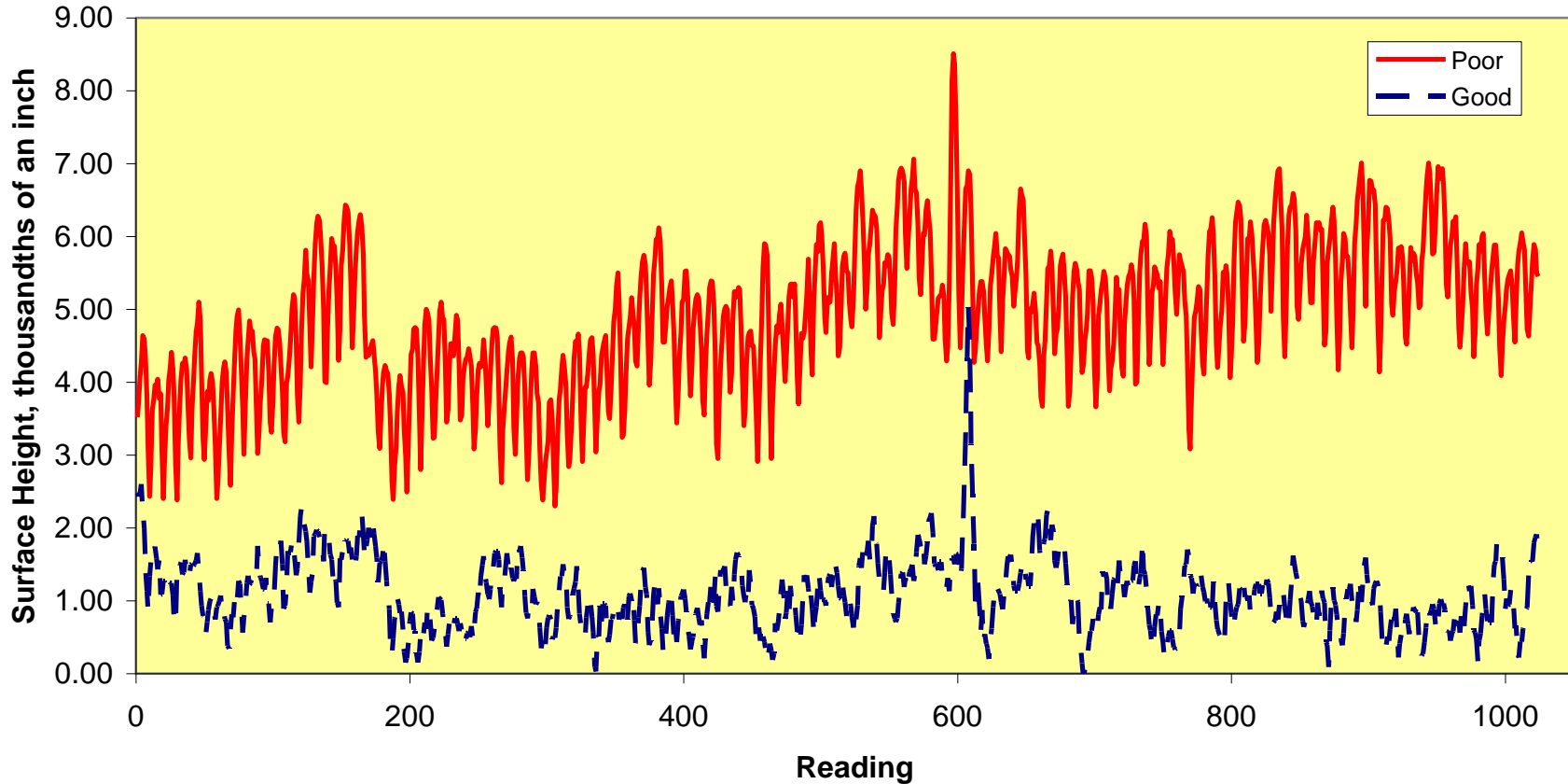
Tappi T 575



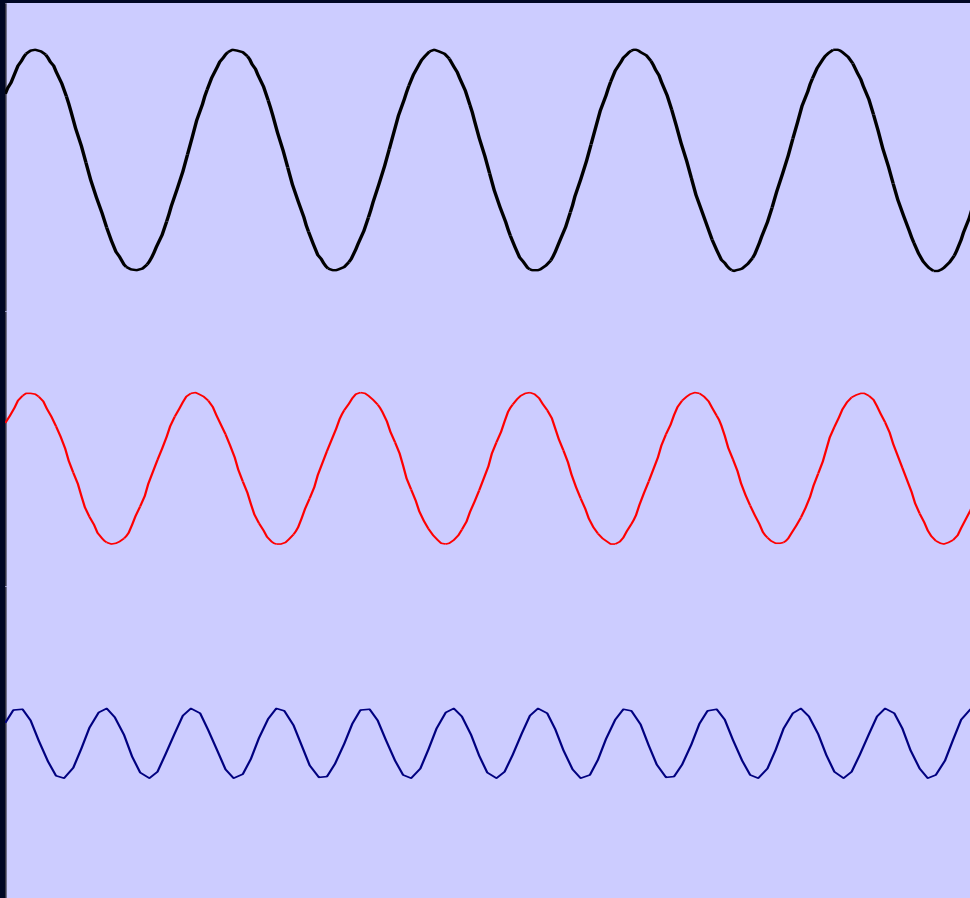
Apply same T 575 method to board



Stylus tracing of combined board with good and poor degrees of washboard.



Flute Frequency Chart

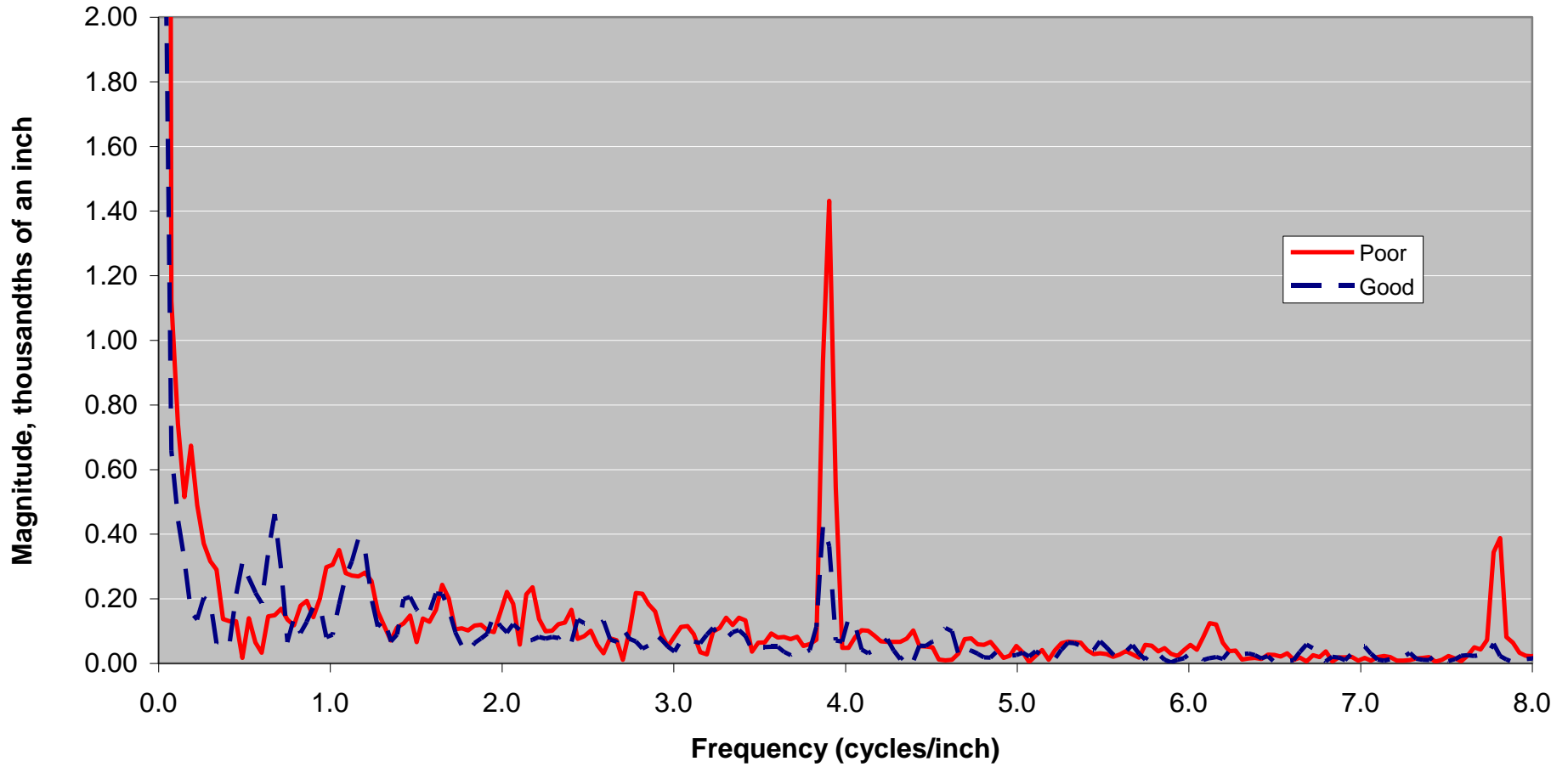


C-Flute

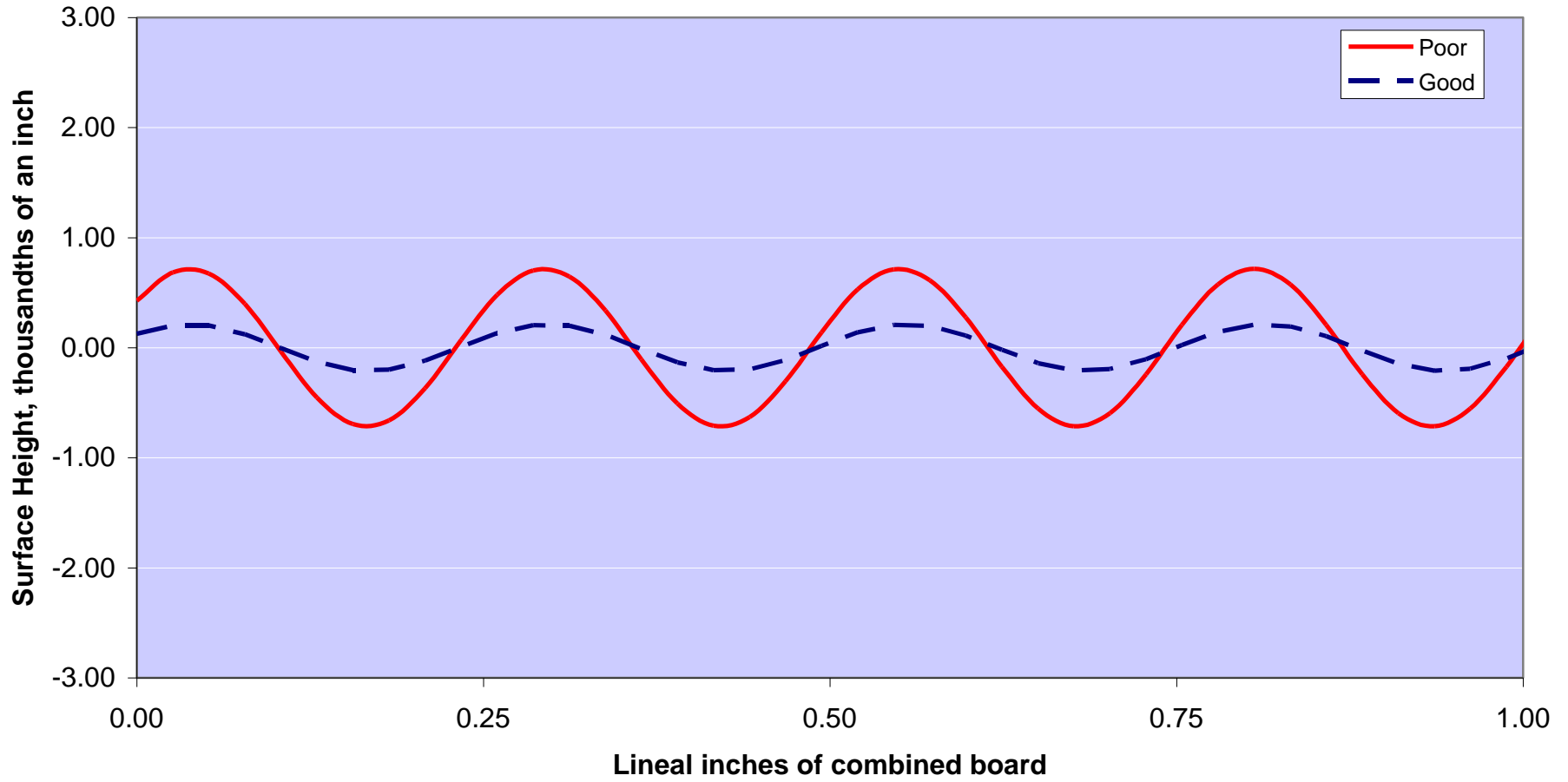
B-Flute

E-Flute

Power spectrum on stylus tracings shows peak occurs at flute frequency.



Reconstruction of board surface using signal output.



How Good is Good

<i>B-Flute Rating</i>	<i>Dashboard Number</i>
<i>Excellent</i>	<i><0.25</i>
<i>Good</i>	<i>0.25-0.50</i>
<i>Fair</i>	<i>0.50-1.0</i>
<i>Poor</i>	<i>>1.0</i>